

I°Anno accademico

Allievo

MARDIN

Mariano Di Nunzio

## 10 Esercizi

Ear training, teoria, scrittura e ortografia musicale  
riconoscimento e identificazione delle scale Tonali

( Maggiore e relative minori naturale , melodica, armonica e jazz minor o Bachiana )

in due ottave diverse

Cognome ..... Nome.....

# Esercizio di ear training, teoria, scrittura e ortografia musicale

## Trascrivere sul pentagramma le scale proposte

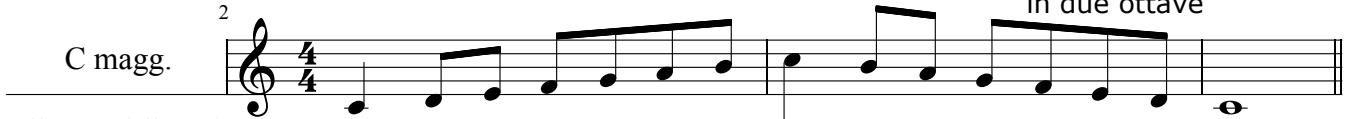
Maggiore, minore naturale, melodica, armonica e jazz minor (o Bachiana)  
aggiungere le alterazioni in chiave e le eventuali alterazioni transitorie

### Esercizio 1

Le scale scritte sono proposte nei file audio ogni scala viene proposta 2 volte in due ottave

2

C magg.



Scrivere il nome della scala

esempio di come scrivere ritmicamente le scale

A min. nat.



A min. mel

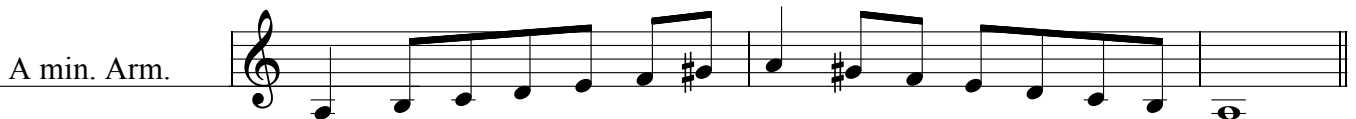


aggiungere alle note le eventuali alterazioni transitorie

A Jazz minor  
o Bach

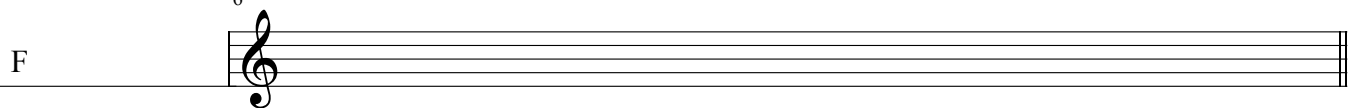
5

A min. Arm.



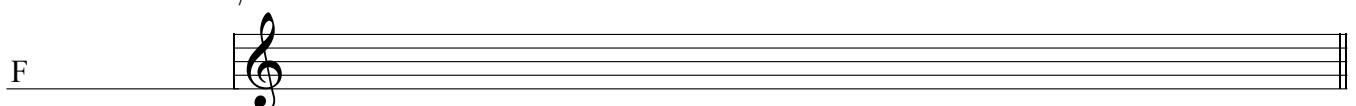
6

F



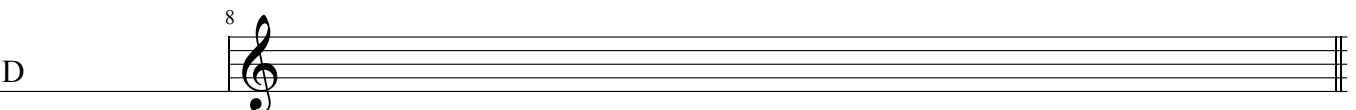
7

F



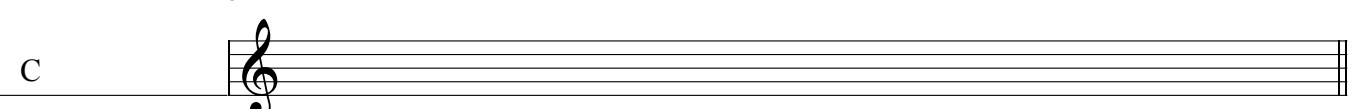
8

D



8

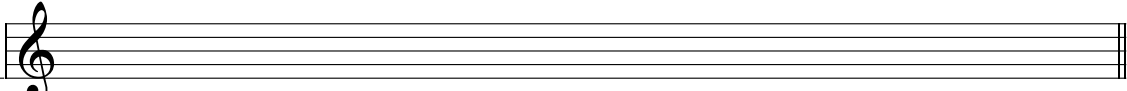
C



## Esercizio 2

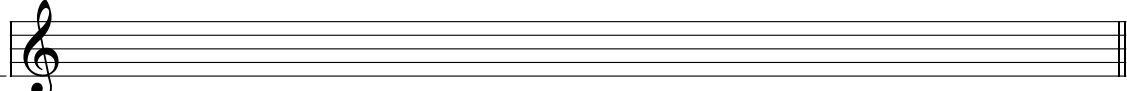
1

F

A musical staff in treble clef with a treble clef symbol. The staff is empty, with a double bar line at the end. The letter 'F' is written to the left of the staff.

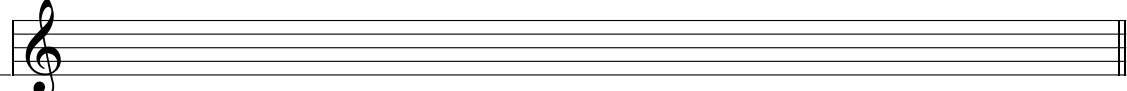
2

G

A musical staff in treble clef with a treble clef symbol. The staff is empty, with a double bar line at the end. The letter 'G' is written to the left of the staff.

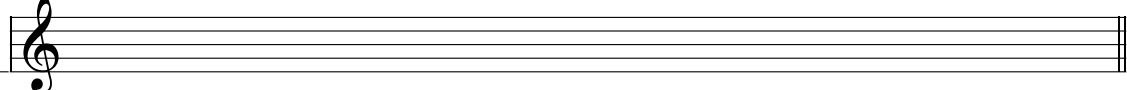
3

D

A musical staff in treble clef with a treble clef symbol. The staff is empty, with a double bar line at the end. The letter 'D' is written to the left of the staff.

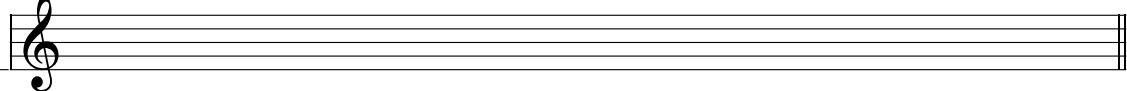
4

B

A musical staff in treble clef with a treble clef symbol. The staff is empty, with a double bar line at the end. The letter 'B' is written to the left of the staff.

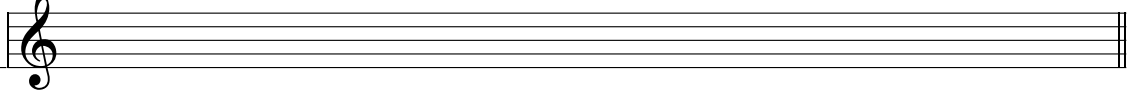
5

B

A musical staff in treble clef with a treble clef symbol. The staff is empty, with a double bar line at the end. The letter 'B' is written to the left of the staff.

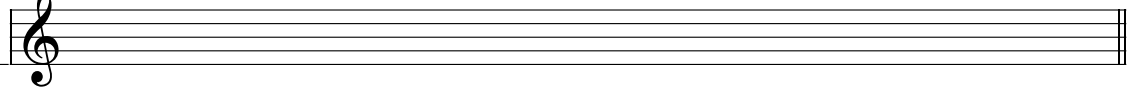
6

E<sub>b</sub>

A musical staff in treble clef with a treble clef symbol. The staff is empty, with a double bar line at the end. The letter 'E<sub>b</sub>' is written to the left of the staff.

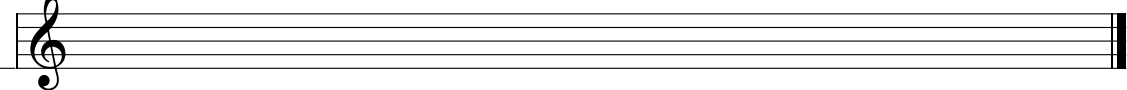
7

C

A musical staff in treble clef with a treble clef symbol. The staff is empty, with a double bar line at the end. The letter 'C' is written to the left of the staff.

8

E<sub>b</sub>

A musical staff in treble clef with a treble clef symbol. The staff is empty, with a double bar line at the end. The letter 'E<sub>b</sub>' is written to the left of the staff.

**Esercizi Continuano....**