

Allievo



Mariano Di Nunzio

20 Esercizi

Riconoscimento e identificazione degli arpeggi
(quadriadi in posizione fondamentale)

Quadriadi

C^{maj7} / C^7 / C^6 / $C^{m\Delta}$ / C^{m7} / C^{m6} / C^{m7b5} / C^{dim7} / $C^{dim\Delta}$ /
 $C^{maj7\#5}$ / C^{maj7b5} / $C^{7\#5}$ / C^{7b5} / C^7sus^4 / $C^\Delta sus^4$ / C^7sus^2 / $C^\Delta sus^2$

Cognome Nome.....

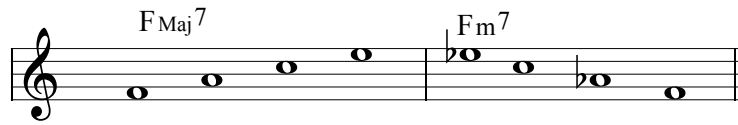
Terminologia delle sigle – solo quadriadi

Non c'è una regola... l'importante essere chiaro.... solo quadriadi

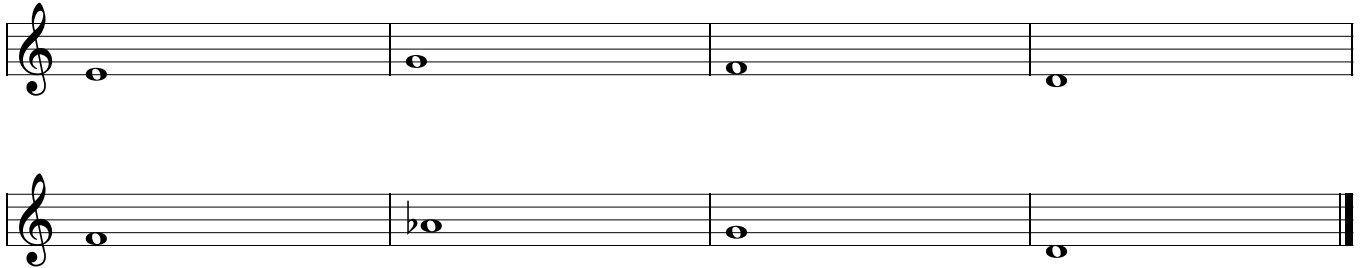
Sigle (di uso più comune)	Note	alternativa
C triad	C – E – G	
Cm triad	C – Eb – G	Cmin triad / C – triad
C ^{#5}	C – E – G [#]	C+
C ^{b5}	C – E – Gb	
C ^o	C – Eb – Gb	Cdim (quando trovi solo ^o o dim indica la triade)
C ^{sus4}	C – F – G	
C ^{sus2}	C – D – G	
C	C – E – G – C	(quando l'accordo è perfetto)
Cm	C – Eb – G – C	Cmin / C – (quando l'accordo è perfetto)
C ⁶	C – E – G – A	
Cm ⁶	C – Eb – G – A	Cmin ⁶ / C ⁻⁶
CMaj ⁷	C – E – G – B	C ^Δ / C ^{Δ7}
CMaj ⁷ (#5)	C – E – G [#] – B	C ^Δ (#5) / C ^{Δ7} (#5) / CMaj ⁷ (#5)
CMaj ⁷ (b5)	C – E – Gb – B	C ^Δ (b5) / C ^{Δ7} (b5) / CMaj ⁷ (b5)
CMaj ⁷ (#11)	C – E – G – B – F [#]	C ^Δ (#11) / C ^{Δ7} (#11) / CMaj ⁷ (#11)
C ⁷	C – E – G – Bb	
C ⁷ (#5)	C – E – G [#] – Bb	C+ ⁷
C ⁷ (b5)	C – E – Gb – Bb	
C ⁷ (b9)	C – E – G – Bb – Db	
C ⁷ (#9)	C – E – G – Bb – D [#] (Eb)	
C ⁷ (#11)	C – E – G – Bb – F [#]	
C ⁷ (#5/b9)	C – E – G [#] – Bb – Db	
C ⁷ (b5/b9)	C – E – Gb – Bb – Db	
C ⁷ (#5/#9)	C – E – G [#] – Bb – D [#] (Eb)	
C ⁷ (b5/#9)	C – E – Gb – Bb – D [#] (Eb)	
C ⁷ (b9/#9)	C – E – G – Bb – Db – D [#] (Eb)	
C ⁷ (#5/b9/#9)	C – E – G [#] – Bb – Db – D [#] (Eb)	
C ⁷ (b5/#5/b9/#9)	C – E – Gb – G [#] – Bb – Db – D [#] (Eb)	
C ⁷ (b9/#11)	C – E – G – Bb – Db – F [#]	
C ⁷ (#9/#11)	C – E – G – Bb – D [#] (Eb) – F [#]	
C ⁷ (b9/#9/#11)	C – E – G – Bb – Db – D [#] (Eb) F [#]	
C ⁷ (#5/b9/#9/#11)	C – E – G [#] – Bb – Db – D [#] (Eb) F [#]	
C ⁷ (b5/#5/b9/#9/#11)	C – E – Gb – G [#] – Bb – Db – D [#] (Eb) – F [#]	
C ⁷ sus4	C – F – G – Bb	
C ^Δ sus4	C – F – G – B	CMaj ^{sus4} / CMaj ⁷ sus4
C ⁷ sus2	C – D – G – Bb	
C ^Δ sus2	C – D – G – B	CMaj ^{sus2} / CMaj ⁷ sus2
Cm ⁷	C – Eb – G – Bb	Cmin ⁷ / C ⁻⁷
Cm ^Δ	C – Eb – G – B	Cmin ^(Maj7) / Cm ^(Maj7) / Cmin ^Δ / C ^{-Δ}
C ^o - Cm ⁷ ^{b5}	C – Eb – Gb – Bb	Cmin ⁷ ^{b5} / Cm ⁷ ^{b5} / C ⁻⁷ ^{b5}
C ^o 7	C – Eb – Gb – Bbb (A)	Cdim7
C ^o 7 (Δ)	C – Eb – Gb – A – B	Cdim7 ^(Δ)
Cdim ^{Maj7}	C – Eb – Gb – B	Cdim ^Δ / C ^{oΔ} / C ^o Maj ⁷

Trascrivere sul pentagramma gli arpeggi proposti
 aggiungere la sigla sopra ogni arpeggio
 ogni arpeggio viene proposto 3 volte
 moto ascendente e discendente

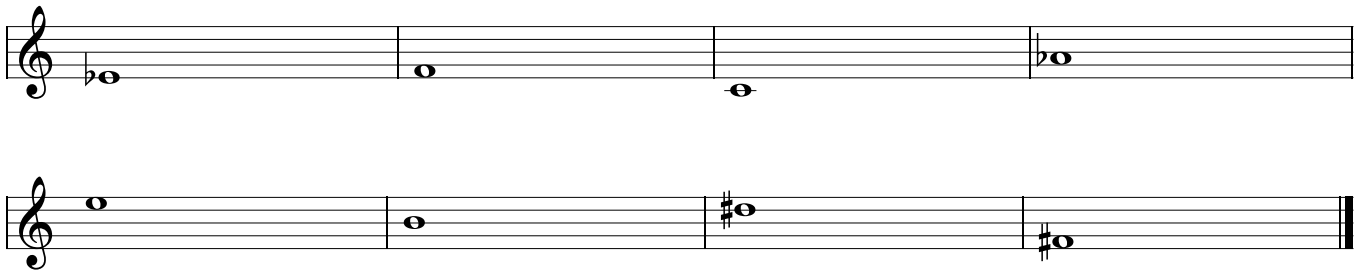
Es. come scrivere
 gli arp. con le relative sigle



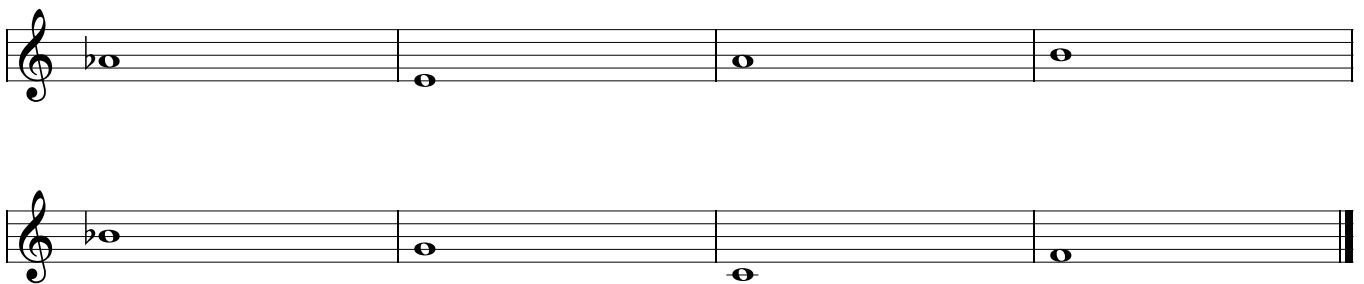
ESERCIZIO N° 1



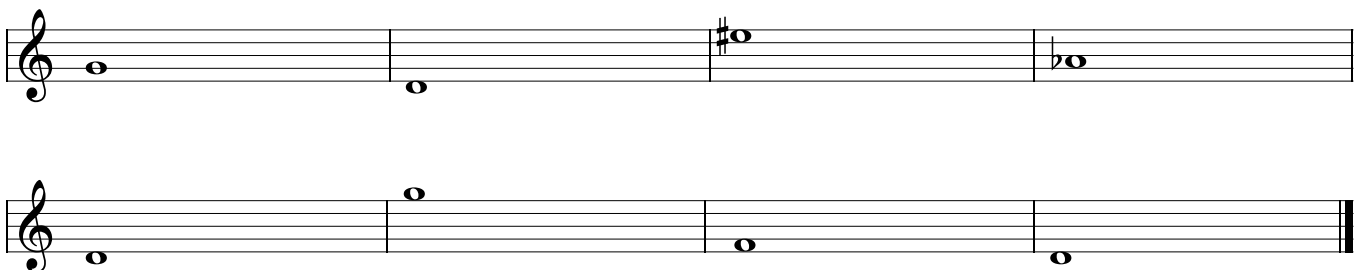
ESERCIZIO N° 2



ESERCIZIO N° 3



ESERCIZIO N° 4



Esercizi Continuano....